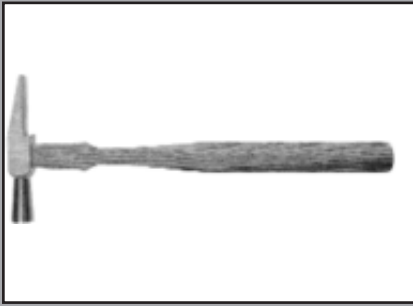


## HAMMERS



## MALLET



## ANVILS



## SAWS



## V BLOCK & CLAMP



BENCH PIN & ANVIL	76
COPING SAW	78
FRETSAW BLADES	78
FRETSAW FRAME	78
HAMMER S & MALLETS	72 - 73
HACKSAWS	75 - 76
MINITURE ANVILS	73 - 74
MINITURE PINS	74
MITRE BOXES	80
PIERCING SAW BLADES	77
PIERCING SAW FRAMES	77
PIN PUSHERS	74
RAZOR SAWS	79 - 80
SAW BLADE LUBRICANT	77
SAW KNIFE BLADES	79
STAPLE GUNS	74 - 75
V-BLOCK & CLAMPS	79
WOOD SAWS	78 - 79
ZONA RAZOR SAWS	78

# SQUIRES MODEL & CRAFT TOOLS

## HAMMERS & MALLETS

**WATCHMAKERS MALLET WITH BRASS & NYLON FACES** a high quality jewellers and watchmakers mallet with a solid brass head. The head has one brass and one nylon face. The handle is 225mm long and has an increased diameter handle and is knurled for extra grip.

Weight 3oz.



CODE	TYPE	PRICE
050-028	Watchmakers Mallet Brass & Nylon Faces.....	£7.50

**WATCHMAKERS MALLET WITH 6 HEADS** a high quality jewellers and watchmakers mallet. It has a range of 6 interchangeable heads which screw on. There is 4 steel, a brass and an acrylic head. The handle is 185mm long and has an increased diameter handle and is knurled for extra grip. Weight 3oz.



CODE	TYPE	PRICE
050-120	Watchmakers Mallet with 6 Heads.....	£6.99

**THOR RAWHIDE MALLET** the head is made from genuine buffalo hide which is tightly coiled and then compressed for durability and set on a shaped wooden handle. Extensively used for all types of sheet metal work and jewellery.

Weight Face dia.  
2oz 1"  
4oz 1 1/4"



CODE	TYPE	PRICE
050-108	Thor Rawhide Mallet 2oz.....	£15.99
050-111	Thor Rawhide Mallet 4oz.....	£19.99

**SWISS STYLE HAMMER** a high quality lightweight hammer similar to those used by watchmakers. It has a hardened steel head with a flat and chisel end for spreading rivets etc.



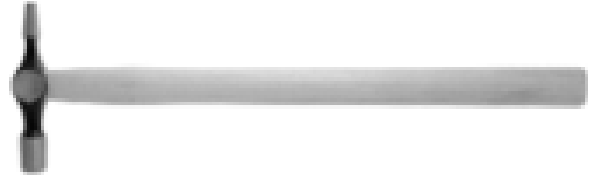
CODE	TYPE	PRICE
050-010	Swiss Style Hammer.....	£6.99

**JEWELLERS HAMMERS** high quality lightweight miniature hammers for use in jewellery and watchmaking. The head is hardened steel with a flat and chisel end for spreading rivets etc. The head is fixed to the shaped hardwood handle with a metal wedge. The length listed is the length across the head, weights listed are approximate and include the head and handle.



CODE	TYPE	PRICE
050-115	Jewellers Hammer 50mm - 25g.....	£8.99
050-160	Jewellers Hammer 60mm - 35g.....	£9.99
050-170	Jewellers Hammer 70mm - 50g.....	£11.99
050-180	Jewellers Hammer 80mm - 65g.....	£12.99
050-190	Jewellers Hammer 90mm - 95g.....	£14.25

**CROSS PEIN HAMMER** a 4oz hammer ideal for small pins and light duty work, the cross-pein is useful for spreading rivets. Polished faces and cheeks.



CODE	TYPE	PRICE
050-117	Cross Pein Hammer 4oz.....	£4.99
050-550	Crown Cross Pein Hammer 3 1/2oz.....	£8.99

**MINIATURE BALL PEIN HAMMERS** high quality lightweight hammers with a flat and ball end. Hardened steel head set on a shaped wooden handle.



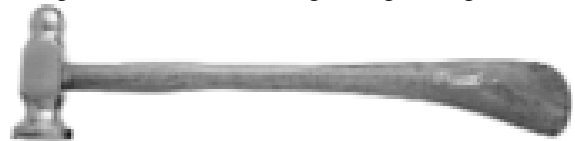
CODE	TYPE	PRICE
050-915	Mini Ball Pein Hammer 1oz.....	£5.99
050-918	Mini Ball Pein Hammer 2oz.....	£7.99
050-782	Mini Ball Pein Hammer 4oz.....	£8.99

**BRASS JEWELLERS HAMMER** a high quality brass jewellers hammer with a shaped hardwood handle. The head has one flat and one domed face, head diameter 5/8"/16mm. Weight 3oz/84gr. Length overall length 230mm.



CODE	TYPE	PRICE
050-518	Brass Jewellers Hammer 3oz.....	£11.99

**REPOUSSÉ HAMMER** used for planishing and forming metal into complex shapes and light rivetting. The 27mm diameter flat face lowers the risk of marking the workpiece and the ball pein is used for shaping. The head is manufactured from quality tool steel hardened, tempered and polished. The hammer is fitted with a hardwood shaft with a bulbous end for resting in the palm. Ideal for use with doming block, anvil or sandbag. Weight 118g.



CODE	TYPE	PRICE
050-346	Repoussé Hammer.....	£6.99

**HIGH QUALITY CHASING HAMMER** a range of high quality chasing hammers with a quality forged steel on a varnished wooden handle. Used for chasing, riveting or peining. Perfect for flattening or shaping craft wire. Length overall 255mm.



CODE	TYPE	PRICE
050-420	H/Q Chasing Hammer 20mm Dia.....	£14.70
050-425	H/Q Chasing Hammer 25mm Dia.....	£15.40
050-428	H/Q Chasing Hammer 28mm Dia.....	£15.99
050-367	H/Q Chasing Hammer 32mm Dia.....	£16.80

# SQUIRES MODEL & CRAFT TOOLS

**GOLDSMITHS CHISEL HAMMER** a high quality goldsmiths hammer with a high quality chrome plated round faced end and a chiseled end fixed to a varnished wood handle. Used for shaping and riveting. Face diameter 18mm, length 265mm.



CODE	TYPE	PRICE
050-368	Goldsmiths Chisel Hammer 18mm Dia.....	£10.99

**CLAW HAMMER 8oz** a claw hammer with ground head and claws used for nail pulling. The head fitted with a steel shaft. Head Weight 8oz, length 280mm.



CODE	TYPE	PRICE
050-334	Claw Hammer with Steel Shaft 8oz.....	£4.50

**STUBBY CLAW HAMMER** a 10oz claw hammer head set on a stubby handle, ideal for use in confined spaces. The handle is fitted with a shaped rubber grip. The head features a magnet and recess for holding small nails. Length overall 160mm.



CODE	TYPE	PRICE
050-019	Stubby Claw Hammer 10oz.....	£6.99

**STUBBY BALL PEIN HAMMER** an 8oz ball pein hammer head set on a stubby handle, ideal for use in confined spaces. The handle is fitted with a shaped rubber grip. Length overall 160mm.



CODE	TYPE	PRICE
050-021	Stubby Ball Pein Hammer 8oz.....	£7.50

**BALL PEIN HAMMER** traditional ball pein hammer with wooden handle. Hardened and tempered polished head, 1/4lb and 1/2lb weights.



CODE	TYPE	PRICE
050-200	L/C Ball Pein Hammer 1/4lb.....	£3.99
050-202	L/C Ball Pein Hammer 1/2lb.....	£4.99

**FIBREGLASS RUBBER Mallet** with hardened black rubber striking face, fibreglass handle with rubber grip. Available in 2 weights.



CODE	TYPE	PRICE
050-575	Rubber Mallet with Fibreglass Shaft 8oz.....	£3.99
050-580	Rubber Mallet with Fibreglass Shaft 16oz.....	£4.99

**WHITE HEAD RUBBER Mallet WITH FIBREGLASS HANDLE** with a hardened white rubber striking face mounted on a fibreglass shaft fitted with rubber grip. Ideal for non-marking applications. Weight 16oz.



CODE	TYPE	PRICE
050-675	White Rubber Mallet with Fibreglass Shaft 16oz..	£6.99

## MINIATURE ANVILS

**MINIATURE ANVIL** a low cost miniature cast iron bench top anvil for flattening and shaping small workpieces. Ideal for jewellery making or small tasks requiring a small striking surface. Features 25 x 23mm horn, which is ideal for shaping, and 40 x 25mm striking face.



CODE	TYPE	PRICE
050-565	Miniature Anvil 250gm.....	£5.99

**JEWELLERS MINIM ANVIL** a high quality miniature horn anvil for beating and shaping small workpieces. It has a round and flat horn and a hole in the top for rivetting. The anvil top is 30mm x 50mm, length including horns 110mm, height 40mm, weight 500g.



CODE	TYPE	PRICE
050-100	Jewellers Mini Anvil 500gm.....	£16.99

**JEWELLERS MINIM ANVIL** a high quality miniature horn anvil for beating and shaping small workpieces. It has a round and flat horn and a hole in the top for rivetting. The anvil top is 30mm x 50mm, length including horns 110mm, height 40mm, weight 500g.



CODE	TYPE	PRICE
050-101	Deluxe Precision Mini Anvil 500gm.....	£18.99

**WHEN PLACING AN ORDER PLEASE  
USE THE FULL ORDER CODE**

# SQUIRES MODEL & CRAFT TOOLS

**MODELMAKERS BENCH ANVIL** a high quality miniature bench anvil with a round and square section beak for flattening and shaping small workpieces. The anvil base has 2 holes for bench fixing. Length 105mm including beak, height 85mm. Weight 890g.



CODE	TYPE	PRICE
050-103	High Quality Modelmakers Bench Anvil.....	£24.99

**DRAPER ANVIL 4.5Kg** a single bick cast iron anvil with bolt down pattern. It has an oblong working surface 120 x 65mm.



CODE	TYPE	PRICE
35481	Draper Anvil 4.5Kg.....	£64.50

## PIN PUSHERS

**MINI PEN GRIP PIN PUSHER** a miniature pin pusher which is ideal for pushing brass or steel pins, setting miniature model railway track pins, ideal for model boat and dolls houses etc.



CODE	TYPE	PRICE
050-174	Mini Pen Grip Pin Pusher.....	£9.99

**PIN PUSHERS** a range of pin pusher with a quality wood handle. Two sizes are available Ideal for use with miniature pins. The 2mm type is ideal for small pins as used in model boat building and fine track pins. The 3mm type is suited to Hornby type tack pins etc.



CODE	TYPE	PRICE
050-751	Pin Pusher 2mm for Fine Track Pins.....	£8.99
050-752	Pin Pusher 3mm for Hornby Type Track Pins.....	£8.99

**S/J PIN PUSHERS** miniature pin pushers ideal for setting small pins, tacks and brads etc. The ram has a magnet which retains the pin, the pin is then set simply by pushing the handle. Two types available. 9180 has 2.50mm capacity, ideal for fine track pins and other small pins. 9185 has 4.00mm capacity, ideal slightly larger tacks and brads.



CODE	TYPE	PRICE
9180	S/J Pin Pusher 9180 2.50mm.....	£11.99
9185	S/J Pin Pusher 9185 4.00mm.....	£11.99

**CROWN ROSEWOOD HANDLE PIN PUSHER** a high quality rampin made from brass with a rosewood handle, the ram is magnetic and spring loaded allowing pins to be accurately placed without marking the workpiece. Length overall 175mm.



CODE	TYPE	PRICE
050-110	Crown Rosewood Pin Pusher.....	£18.99

## MINIATURE PINS

**MINIATURE BRASS PINS** small round head brass pins for use with the above miniature pin pusher. Ideal for miniature assembly work. 4 sizes available 7, 10 and 12mm length x 0.65mm diameter, and very fine pins length 10mm x 0.5mm. Supplied in packs of approximately 150.

Also available; round head steel pins, 10mm length x 0.7mm diameter. Flat head pins in Brass or Black colour 7mm length x 0.7mm dia.



CODE	TYPE	PRICE
4134-7	7mm Round Head Brass Pins .....	£2.99
4134-10	10mm Round Head Brass Pins .....	£2.99
4134-12	12mm Round Head Brass Pins .....	£2.99
4136-10	10mm Round Head Brass Pins Very Fine.....	£3.50
4133-10	10mm Round Head Black Steel Pins.....	£2.99
190-174	7mm Flat Head Pins 100 Approx Brass.....	£2.99
190-175	7mm Flat Head Pins 100 Approx Black.....	£2.99

## STAPLE GUNS

**ARROW JT27 LIGHT DUTY STAPLE GUN** the JT27 is a great choice for occasional DIY users looking for a dependable yet economical fine wire stapler. The JT27's convenient bottom load magazine with pinch release makes reloading and clearing jams easy and hassle-free. The handle lock secures the handle against the tool frame, making this compact and convenient tool easy to store safely anywhere. Plus, a staple viewing window indicates when staples are running low. Ideal for general repairs, crafts, upholstery, decorating. Uses Arrow JT31 staples 6mm, 8mm or 10mm, in boxes of 1000 staples.



CODE	TYPE	PRICE
AJT27	Arrow JT27 Light Duty Staple Gun.....	£18.99
A214	Arrow JT21 Staples 1/4"/6mm.....	£2.59
A215	Arrow JT21 Staples 5/16"/8mm.....	£2.59
A276	Arrow JT21 Staples 3/8"/10mm.....	£2.59

**IF THERE ARE OTHER PRODUCTS THAT YOU WOULD LIKE US TO STOCK, PLEASE FEEL FREE TO LET US KNOW.**



# SQUIRES MODEL & CRAFT TOOLS

**ARROW T50 JUNIOR STAPLE GUN/TACKER** features an all chromed steel housing, jam resistant mechanism, proven rear load magazine, and steel working parts hardened in a 1,500 degree furnace. A rugged coil spring gives this tool the power and performance one would expect from a much larger stapler in a smaller fine wire format. And a convenient staple viewing window indicates when staples are running low. Ideal for general repairs, professional use, upholstery, decorating and crafts. Uses Arrow JT31 staples 6mm, 8mm or 10mm, in boxes of 1000 staples.



CODE	TYPE	PRICE
AJTC21	Arrow JT21C Junior Tacker and Staple Gun.....	£24.49
A214	Arrow JT21 Staples 1/4"/6mm.....	£2.59
A215	Arrow JT21 Staples 5/16"/8mm.....	£2.59
A276	Arrow JT21 Staples 3/8"/10mm.....	£2.59

**ARROW P22 PLIER-TYPE STAPLER** Arrow's top selling plier stapler. It meets the demands of busy counters, shops, homes, and offices. Its unique cam design, chromed steel housing, hardened steel parts, easy to clear magazine, staple viewing window, and the 63.5mm throat delivers professional and reliable stapling performance on paper, plastic, cardboard, or bags. Staples up to 40 sheets of paper. Uses Arrow P35 staples 6mm or 10mm, supplied in boxes of 5040 staples.



CODE	TYPE	PRICE
AP22	Arrow Plier Type Stapler P22.....	£32.80
A354	Arrow P35 Staples 1/4"/6mm.....	£14.99
A356	Arrow P35 Staples 3/8"/10mm.....	£14.99

**ARROW P35 HEAVY DUTY PLIER-TYPE STAPLER** the P35 heavy duty plier type hand held stapler is the ideal tool for a powerful drive through tough materials. Designed for reaching into hard to get at places, for stapling from any position or angle. The deep throat (63.5mm) is ideal for bagging, sealing and labelling as well as the usual home and office jobs. Uses Arrow P35 staples 6mm or 10mm, supplied in boxes of 5040 staples.



CODE	TYPE	PRICE
AP35	Arrow H/Duty Plier Type Stapler P35.....	£37.99
A354	Arrow P35 Staples 1/4"/6mm.....	£14.99
A356	Arrow P35 Staples 3/8"/10mm.....	£14.99

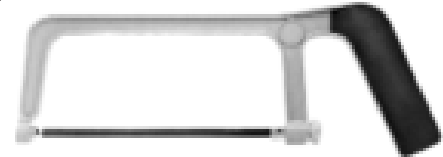
## HACKSAWS

**ECLIPSE JUNIOR HACKSAW** steel frame with finger guard. Accepts 6" junior blades. Supplied with one blade.



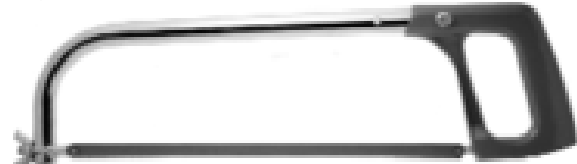
CODE	TYPE	PRICE
050-014	Eclipse Junior Hacksaw.....	£2.99

**6 WAY JUNIOR HACKSAW** a high quality junior hacksaw frame which accepts 6" blades. The alloy frame features 6 way blade holding for improved access and the blade tension is applied by a thumbscrew. Supplied with an aluminium mitre box.



CODE	TYPE	PRICE
050-119	6 Way Junior Hacksaw with Alu Mitre Box.....	£4.99

**STANDARD HACKSAW** a standard 12" hacksaw frame with a large wingnut blade tensioner. Supplied with blade.



CODE	TYPE	PRICE
SA0025	Standard Hacksaw Frame.....	£4.99

**CLOSE QUARTER SAW** a simple but useful saw for many awkward cutting jobs. The diecast handle holds standard 12" hacksaw blades and is ideal for working in restricted spaces. Supplied with one low cost blade, best used with bi-metal blades. Can also be used with broken blades.



CODE	TYPE	PRICE
050-300	Close Quarter Saw.....	£4.99

**JUNIOR HACKSAW BLADES** junior hacksaw blades, length 6", 32 TPI.



CODE	TYPE	PRICE
11237	Draper Junior Hacksaw Blades 10 Pack.....	£3.49
71-132R	Eclipse Junior Hacksaw Blades 10 Pack.....	£3.49

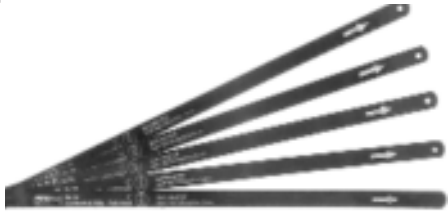
**JUNIOR HACKSAW BLADES FOR WOOD** junior hacksaw blades with specially formed teeth for wood cutting. The pin end blades will fit all junior hacksaw frames. Length 6", 14TPI.



CODE	TYPE	PRICE
SAB007	Junior Hacksaw Blades for Wood 10 Pack.....	£2.99
71-114R	Elipse Junior Hacksaw Blades for Wood 10Pk.....	£3.49

# SQUIRES MODEL & CRAFT TOOLS

**STANDARD HACKSAW BLADES** manufactured from flexible carbon steel for cutting mild steel or soft non-ferrous metal. Blade length 12". The pack contains 2 x 18 TPI and 3 x 24 TPI.



CODE	TYPE	PRICE
74118	Std Hacksaw Blades 5 pack.....	£4.50

**BI-METAL HACKSAW BLADES** high quality hacksaw blades manufactured from high speed steel strip, electron beam welded to a high quality steel backing. Blade length 12" (300mm). Sold in packs of 2 or 10 and boxes of 50. Made in Great Britain.



CODE	TYPE	PRICE
19344	Bi-Metal Hacksaw Blade 18 TPI Pack of 2.....	£5.99
19345	Bi-Metal Hacksaw Blade 24 TPI Pack of 2.....	£5.99
38265	Bi-Metal Hacksaw Blade 32 TPI Pack of 2.....	£5.99
19349	Bi-Metal Hacksaw Blades 18 TPI Box of 50.....	£99.99
19350	Bi-Metal Hacksaw Blades 24 TPI Box of 50.....	£99.99
29807	Bi-Metal Hacksaw Blades 32 TPI Box of 50.....	£99.99

**TUNGSTEN CARBIDE EDGE HACKSAW BLADE** a high quality tungsten carbide grit cutting edge for cutting ceramic tiles, slate, marble, glass, cement, cast iron and hardened steel etc. Fits standard hacksaw frames. Blade length 12". Made in Great Britain.



CODE	TYPE	PRICE
19328	Draper Tungsten Carbide Hacksaw Blade.....	£6.9

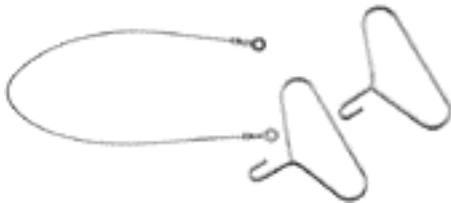
**ROD SAW BLADE** a high quality tungsten carbide blade for cutting ceramic tiles, slate, marble, glass, cement, cast iron and hardened steel etc. For junior and standard hacksaw frames. Blade length 6"/12". Made in Great Britain.



CODE	TYPE	PRICE
13947	Tungsten Carbide Rod Saw Blade 6".....	£5.49
13609	Tungsten Carbide Rod Saw Blade 12".....	£7.49

**FLEXI HAND SAW** ideal for cutting metal and plastic piping etc in confined areas.

Supplied with 2 handles and 2 blades.



CODE	TYPE	PRICE
050-879	Flexi Hand Saw.....	£4.39

## SQUIRES GIFT VOUCHERS

Supplied with a quality card redeemable at any of our exhibition stands, by mail order or at our shop.

- GV5 - Gift Voucher Value £5.00**
- GV10 - Gift Voucher Value £10.00**
- GV20 - Gift Voucher Value £20.00**

## V-BLOCK & CLAMPS

**V-BLOCK & CLAMP** used in conjunction with a piercing saw, this simple but effective tool comprises of a clamp and a hardwood block with a 'V' cut into it. The block is clamped to a table and the work is placed on the block, cutting inside the 'V' jaws of the block supports the work. Use for all piercing and fret work. Block size 195mm x 60mm.



CODE	TYPE	PRICE
051-366	V-Block & Clamp for Fret & Piercing Work.....	£7.99

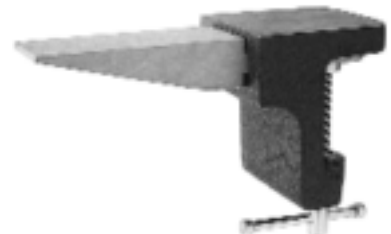
**PLANET WORK BENCH** a useful variation of the bench pin, manufactured from tough plastic and supplied with 2 bench fixing clamps. The maximum capacity of the table clamps is 45mm. The large work surface is ideal for supporting fragile workpieces when cutting intricate shapes. The bench surface has 3 small slots which are ideal for holding thin strips of material while filing etc. For larger pieces, 2 posts are supplied which can be located in any of 12 holes, the work piece is then held against this when sawing or filing. The front of the bench has a step which is ideal for holding small pieces when sawing. The work bench surface has holes which are the centre of a socket under the bench, these are used for marking the centre of a dowel. Socket diameters:- 3, 4, 5, 6, 8 and 10mm. A miniature vice attachment is also available which locates into any of the 12 holes in the work surface. The attachment has 24mm jaws, which open to 14mm max.



CODE	TYPE	PRICE
EA7396	Planet Working Bench.....	£17.99
7396/01	Mini Vice for Planet Work Bench.....	£9.99

## BENCH PIN & ANVIL

**COMBINATION BENCH PIN AND ANVIL** a useful extension to the work bench. It features a heavy anvil which clamps to the edge of a work bench up to 48mm thick, the work surface of the anvil is 70 x 80mm and is precision finished for flattening or laying out work. The wooden pin which also serves to protect the bench top and is used for piercing work. The working surface of the hardwood bench pin is 100mm x 43mm. Replacement pins are available.



CODE	TYPE	PRICE
051-341	Combination Bench Pin And Anvil.....	£24.99
051-342	Replacement Pin.....	£4.99

# SQUIRES MODEL & CRAFT TOOLS

## PIERCING SAW FRAMES

**HIGH QUALITY FIXED PIERCING SAW FRAME** an improved high quality fixed piercing saw frame, light weight and well balanced with a shaped hardwood handle. Ideal for intricate work, throat depth 85mm.



CODE	TYPE	PRICE
051-047	High Quality Fixed Piercing Saw Frame.....	£8.99

**ADJUSTABLE PIERCING SAW FRAME** an improved design high quality adjustable piercing saw frame which allows the use of shorter or broken blades. The saw frame is chrome plated, well balanced and has a shaped wooden handle. 75mm throat depth.



CODE	TYPE	PRICE
051-040	H/Quality Adjustable Piercing Saw Frame 75mm.	£10.99

**DE LUXE ADJUSTABLE PIERCING SAW FRAMES** these de luxe frames with a blade tensioner are an industry standard in the Jewellery Trade. The slim hardwood handle is lacquered, the frame is light and well balanced. Available in 4 throat depths.



CODE	TYPE	PRICE
SA1079/3	De Luxe Adj Piercing Saw Frame 75mm.....	£13.99
SA1079/4	De Luxe Adj Piercing Saw Frame 100mm.....	£15.99
SA1079/5	De Luxe Adj Piercing Saw Frame 125mm.....	£17.99
SA1079/6	De Luxe Adj Piercing Saw Frame 150mm.....	£19.99

## ECONAMY PIERCING SAW BLADES

**ECONOMY PIERCING SAW BLADES** of good quality budget priced piercing saw blades suitable for light work as a low cost alternative to the Professional Quality German blades listed over. Supplied in a pack of 72 blades containing:- 24 x 6/0, 24 x 5/0, 12 x 4/0 and 12 x 3/0.



CODE	TYPE	PRICE
SAB090	Piercing Saw Blades Assorted 72 Pack.....	£6.99

## HIGH QUALITY PIERCING SAW BLADES

**HIGH QUALITY PIERCING SAW BLADES** high quality piercing saw blades manufactured in Germany. These blades are manufactured to a very high standard with accurately formed teeth and are used by jewellers and watchmakers. Supplied in dozens and packs of 144. **\*\*Note - you may now mix your gross packs i.e. select 12 packs of 1 dozen for £37.69\*\***



CODE	TYPE	Size	Thickness mm	Width mm	Teeth per inch	PRICE
1080/60	Piercing Saw Blades	6/0	0.18	0.36	81.....	£3.49
1080/50	Piercing Saw Blades	5/0	0.20	0.40	71.....	£3.49
1080/40	Piercing Saw Blades	4/0	0.22	0.44	67.....	£3.49
1080/30	Piercing Saw Blades	3/0	0.48	0.48	60.....	£3.49
1080/20	Piercing Saw Blades	2/0	0.26	0.52	56.....	£3.49
1080/0	Piercing Saw Blades	0	0.28	0.58	52.....	£3.49
1080/1	Piercing Saw Blades	1	0.30	0.63	48.....	£3.49
1080/2	Piercing Saw Blades	2	0.34	0.70	44.5....	£3.49
1080/3	Piercing Saw Blades	3	0.36	0.74	40.5....	£3.49
1080/4	Piercing Saw Blades	4	0.38	0.80	38.....	£3.49
1080/5	Piercing Saw Blades	5	0.40	0.85	35.5....	£3.49
1080/6	Piercing Saw Blades	6	0.44	0.94	34.....	£3.49

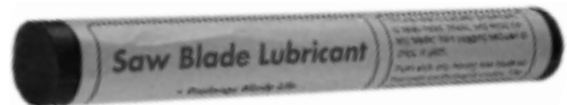
**\*\*Note - you may now mix your gross packs i.e. select 12 packs of 1 dozen for £37.69\*\***

Please ensure you advise your required mix of blades

CODE	TYPE	PRICE
B1080/60	Piercing Saw Blades 6/0 Pack of 144.....	£37.69
B1080/50	Piercing Saw Blades 5/0 Pack of 144.....	£37.69
B1080/40	Piercing Saw Blades 4/0 Pack of 144.....	£37.69
B1080/30	Piercing Saw Blades 3/0 Pack of 144.....	£37.69
B1080/20	Piercing Saw Blades 2/0 Pack of 144.....	£37.69
B1080/0	Piercing Saw Blades 0 Pack of 144.....	£37.69
B1080/1	Piercing Saw Blades 1 Pack of 144.....	£37.69
B1080/2	Piercing Saw Blades 2 Pack of 144.....	£37.69
B1080/3	Piercing Saw Blades 3 Pack of 144.....	£37.69
B1080/4	Piercing Saw Blades 4 Pack of 144.....	£37.69
B1080/5	Piercing Saw Blades 5 Pack of 144.....	£37.69
B1080/6	Piercing Saw Blades 6 Pack of 144.....	£37.69
<b>B1080/M</b>	<b>P/Saw Blades 12 Packs of 12 (Advise Mix).....</b>	<b>£37.69</b>

## SAW BLADE LUBRICANT

**SAW BLADE LUBRICANT** a wax stick which is used to lubricant blades. It prolongs blade life and produces smoother and faster cuts, also helps to prevent wood saw blades from clogging. Used with most types of power saws and hand saws including:- fret-saws, piercing saws, hacksaws, scroll saws, bandsaws and circular saws. Stick length 200mm x 25mm.



CODE	TYPE	PRICE
050-901	Saw Blade Lubricant.....	£10.99

**IF THERE ARE OTHER PRODUCTS THAT YOU WOULD LIKE US TO STOCK, PLEASE FEEL FREE TO LET US KNOW.**



# SQUIRES MODEL & CRAFT TOOLS

## FRETSAW FRAME

**ECLIPSE 11" FRETSAW FRAME** rigid well balanced frames with shaped hard wood handles. Supplied with 1 blade. Uses 5" plain end blades.



CODE	TYPE	PRICE
70-FS1R	Eclipse 11" Fretsaw Frame.....	£12.99

**PLAIN END FRETSAW BLADES** a range of carbon steel with hardened steel teeth. Suitable for cutting wood, plastics, non-ferrous metals and most other materials. Supplied in packs of 12.



CODE	TYPE	Width x			PRICE
		TPI	Thickness MM	Grade	
25498	Plain End F/S Blades	28	0.62 x 0.29	2/0.....	£4.99
25499	Plain End F/S Blades	25	0.67 x 0.32	0.....	£4.99
25500	Plain End F/S Blades	23	0.76 x 0.34	1.....	£4.99
25501	Plain End F/S Blades	20	0.82 x 0.36	2.....	£4.99
25502	Plain End F/S Blades	18	0.90 x 0.38	3.....	£4.99
25503	Plain End F/S Blades	15	0.97 x 0.40	4.....	£4.99
25504	Plain End F/S Blades	12.5	0.97 x 0.40	5.....	£4.99
25505	Plain End F/S Blades	12.5	1.13 x 0.45	6.....	£4.99
25506	Plain End F/S Blades	11.5	1.25 x 0.25	7.....	£4.99
25508	Plain End F/S Blades	11.5	1.45 x 0.50	9.....	£4.99
25509	Plain End F/S Blades	10	1.65 x 0.60	12.....	£4.99

## COPING SAW

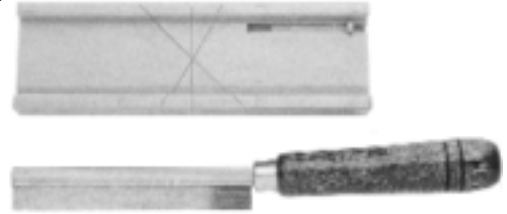
**ECLIPSE COPING SAW** a 5-1/8" coping saw with steel frame and shaped wooden handle. The blade can be turned though 360° for ease of use when cutting intricate shapes in wood. Supplied with 1 blade.



CODE	TYPE	PRICE
170-715	Eclipse Coping Saw Frame.....	£10.99
170-717	Eclipse Coping Saw Blades 10 Pack.....	£4.99

## ZONA RAZOR SAWS

**ZONA RAZOR SAWS** ultra thin razor saws suitable for cutting small mouldings, plastics and non-ferrous metals. 3 types are available. Ideal for all miniature and modelling work. The blades are very thin: only 0.20mm/.008", length 114mm/4½", cutting depth 12.7mm/1/2".



CODE	TYPE	PRICE
35-200	Zona Razor Saw Medium 32TPI.....	£11.99
35-150	Zona Razor Saw Fine 42TPI.....	£11.99
35-050	Zona Razor Saw Super Fine 52TPI.....	£11.99
35-251	Zona Razor Saw Med 32TPI with Plastic Mitre....	£19.99
35-250	Zona Plastic Mitre Box.....	£10.49

**ZONA UNIVERSAL RAZOR SAW** a good all purpose saw used for model making and small wood working. Cuts balsa, soft and hardwoods, plastics and non-ferrous metals. The blade is only 0.25mm/.010", length 165mm/6½", cutting depth 30mm/1-3/16". 32 TPI.



CODE	TYPE	PRICE
35-500	Zona Universal Razor Saw 32TPI.....	£12.99

**ZONA FINE WOODCRAFT SAW** ideal for cutting hard and soft wood, particularly small picture frames, dolls house parts and fine dovetail work. The blade is very thin only 0.38mm/.015", length 165mm/6", cutting depth 22mm/7/8". 24 TPI.



CODE	TYPE	PRICE
35-300	Zona Fine Woodcraft Saw 24TPI.....	£11.99

**ZONA FLUSH CUTTING SAW** with a very flexible blade for use when cutting flush to a surface, cutting a dowel or a peg for example. The saw cuts on the pull stroke and the teeth have no set. Ideal for all miniature work. 16TPI, blade length 6½", blade thickness 0.3mm/0.012", width 1¼".



CODE	TYPE	PRICE
35-400	Zona Flush Cutting Saw .....	£15.99

## WOOD SAWS

**CROWN FLUSH CUTTING SAW** for use when cutting flush to a surface, cutting a dowel or a peg for example. It has a very flexible alloy steel blade with Rosewood handle and brass ferrule. The saw cuts on the pull stroke and the teeth have no set. Ideal for all miniature work. 20TPI, blade length 6". Made in Sheffield.



CODE	TYPE	PRICE
SA187F	Crown Flush Cut Saw 6".....	£15.99

## SQUIRES GIFT VOUCHERS

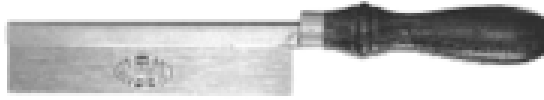
Supplied with a quality card redeemable at any of our exhibition stands, by mail order or at our shop.

- GV5 - Gift Voucher Value £5.00
- GV10 - Gift Voucher Value £10.00
- GV20 - Gift Voucher Value £20.00



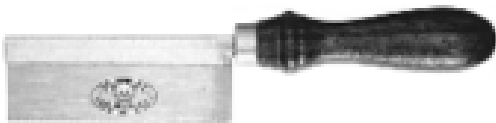
# SQUIRES MODEL & CRAFT TOOLS

**CROWN 6" MODEL MAKERS SAW** a fine tooth saw ideal for very precise work. The blade is tempered alloy steel and the teeth have a very fine set for cutting across and down the grain. Ideal for all miniature work. Rosewood handle with brass ferrule. 20TPI, blade length 6". Made in Sheffield.



CODE	TYPE	PRICE
SA187JS	Crown Model Makers Saw 6".....	£19.99

**CROWN 4" GENTS SAW** similar to a dovetail saw but with a straight chisel type handle. The blade is tempered alloy steel and the teeth are set for cutting across and down the grain. Ideal for cutting miniature mouldings, mitre and picture frames etc. Rosewood handle with brass ferrule. 25 TPI, blade length 4". Made in Sheffield.



CODE	TYPE	PRICE
SA187M	Crown Gents Saw 4".....	£16.49

**CROWN 6" GENTS SAW** similar to a dovetail saw but with a straight chisel type handle. The blade is tempered alloy steel and the teeth are set for cutting across and down the grain. Ideal for cutting miniature mouldings, mitre and picture frames etc. Rosewood handle with brass ferrule. 17 TPI, blade depth 1-3/4", blade length 6". Made in Sheffield.



CODE	TYPE	PRICE
SA186	Crown Gents Saw 6".....	£17.99

**CROWN 4" REVERSIBLE GENTS SAW** a miniature saw which is ideal for working in restricted spaces, up to bulkheads etc. It has an alloy steel blade, Rosewood handle with brass ferrule. The handle is offset and the blade is fixed with a pivot and bolt. By unscrewing the bolt, the handle can be swivelled through 180°, the result of this is that the handle is offset to the other side of the blade. The teeth have no set and cut in either direction. 20TPI, blade length 4". Made in Sheffield.



CODE	TYPE	PRICE
SA187RS	Crown Reversible Saw 4".....	£19.20

**HARDPOINT DOVETAIL SAW** a small hardpoint dovetail saw with a straight handle. The thin blade is polished with universal teeth for cutting across and down the grain. The back is reinforced for rigidity when cutting. The 12 teeth per inch ensure a fine finish. Blade length 200mm.



CODE	TYPE	PRICE
29266	Hardpoint Dovetail Saw. 68757.....	£8.99

**COMPASS SAW** a general purpose saw for cutting a range of materials and is ideal for use where space is limited. The handle is diecast metal, the three interchangeable blades are hardened steel suitable for cutting wood, veneer board and mild steel/nonferrous metals. Blade length 200mm.



CODE	TYPE	PRICE
83135	Draper Compass Saw.....	£9.99

## SAW KNIFE BLADES

**SAW KNIFE BLADE FOR WOOD** a narrow blade which is ideal for sawing in restricted areas or for cutting curves. Use with "Stanley" type trimming knife handles, illustrated in craft knife section.



CODE	TYPE	PRICE
050-276	Stanley Saw Knife Blade for Wood.....	£3.49

**SAW KNIFE BLADE FOR METAL** a narrow blade which is ideal for sawing in restricted areas or for cutting curves. Use with "Stanley" type trimming knife handles, illustrated in craft knife section.



CODE	TYPE	PRICE
050-277	Stanley Saw Knife Blade for Metal.....	£3.49

## RAZOR SAWS

**RAZOR SAW BLADE No 234** for delicate sawing, cutting of circuit boards, modelling, shaping balsa wood, cutting of fibreglass, plastics, thin gauge tubing, metals and also model railway track. Blade length 5", height 3/4", 42 TPI.



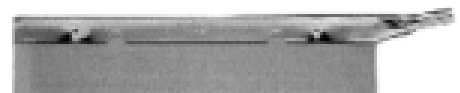
CODE	TYPE	PRICE
140-236	Razor Saw Blade No 234.....	£4.29

**RAZOR SAW BLADE No 235** for delicate sawing, cutting of circuit boards, modelling, shaping balsa wood, cutting of fibreglass, plastics, thin gauge tubing, metals and also model railway track. Blade length 5", height 1", 42 TPI.



CODE	TYPE	PRICE
140-235	Razor Saw Blade No 235.....	£4.49

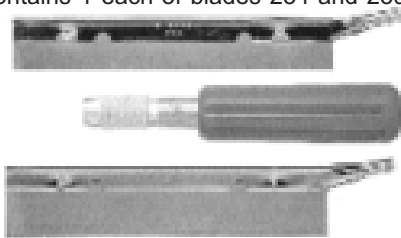
**RAZOR SAW BLADE No 239** for delicate sawing in confined spaces, cutting circuit boards, shaping balsa wood, cutting fibreglass, plastics, metals and model railway track. Blade length 5", height 1 1/4", 54TPI.



CODE	TYPE	PRICE
140-239	Razor Saw Blade No 239.....	£4.89

# SQUIRES MODEL & CRAFT TOOLS

**RAZOR SAW SET** contains 1 each of blades 234 and 239 with a No 5 handle.



CODE	TYPE	PRICE
140-544	Razor Saw Set (No's 234 & 239)	£9.99

## MITRE BOXES

**MINI MITRE BOX** manufactured from tough impact resistant plastic, it has two 45° and two 90° guides, the base has two countersunk holes for bench fixing if required. Ideal for use with slitting/razor saws.

Dims:-  
 Length.....190mm  
 Width.....49mm  
 Height .....31mm  
 Internal width .....29mm



CODE	TYPE	PRICE
160-511	Mini Mitre Box	£1.89

**MINI MITRE BOX 200mm** a moulded mini mitre box made from tough impact resistant recycled plastic. It has two 45° and one 90° guide on both edges and two countersunk holes for fixing to work-bench. Ideal for small scale or precision work including model making etc.

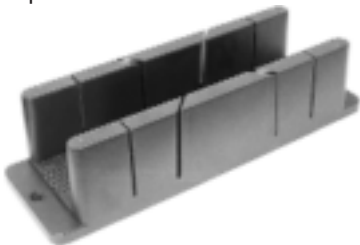
Dims:-  
 Length.....200mm  
 Width.....64mm  
 Height .....51mm  
 Internal width .....35mm



CODE	TYPE	PRICE
48677	Mini Mitre Box 200mm	£2.99

**MIDI MITRE BOX** manufactured from tough impact resistant plastic, it has two 45° and two 90° guides, the base has two countersunk holes for bench fixing if required. Ideal for use with dovetail and tenon saws etc.

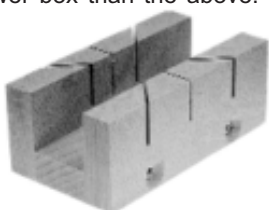
Dims:-  
 Length.....290mm  
 Width.....85mm  
 Height .....70mm  
 Internal width .....57mm



CODE	TYPE	PRICE
160-766	Midi Mitre Box	£4.50

**CROWN MINIATURE BEECHWOOD MITRE BOX** a miniature beechwood mitre with a narrower box than the above. It has two 45° and one 90° mitre guide.

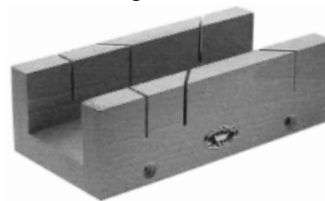
Dims:-  
 Length.....114mm  
 Width.....62mm  
 Height .....45mm  
 Internal width .....31mm  
 Internal height.....29mm



CODE	TYPE	PRICE
MTB036	Crown Miniature Beechwood Mitre Box	£8.99

**CROWN BEECHWOOD MITRE BOX** a standard size beechwood mitre box with two 45° and one 90° mitre guide.

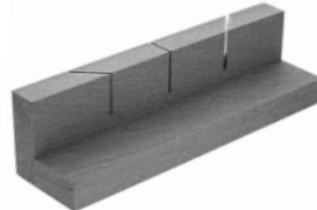
Dims:-  
 Length.....223mm  
 Width.....110mm  
 Height .....70mm  
 Internal width .....70mm  
 Internal height.....50mm



CODE	TYPE	PRICE
C102A	Crown 9" Mitre Box	£11.99

**CROWN BEECHWOOD MITRE BLOCK** a standard size beechwood mitre block with two 45° and one 90° mitre guide.

Dims:-  
 Length.....223mm  
 Width.....60mm  
 Height .....62mm



CODE	TYPE	PRICE
C100A	Crown 9" Mitre Block	£7.99

**MINI PLASTIC BENCH HOOK** manufactured from tough impact resistant plastic, it has two 45° and two 90° guides. Ideal for small mouldings and sections.

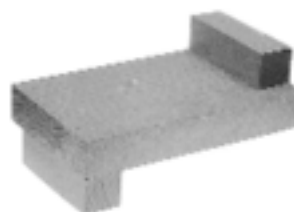
Dims:-  
 Length.....180mm  
 Width.....125mm



CODE	TYPE	PRICE
160-318	Mini Plastic Bench Hook	£2.99

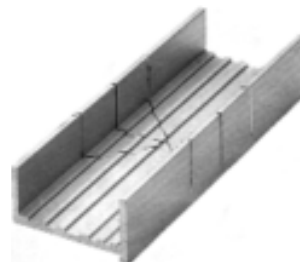
**BEECHWOOD BENCH HOOKS** for holding small mouldings while cutting with a small saw. The bench hook is simply placed against the edge of the bench or table then the workpiece is held against the bench hook. 2 sizes are available. Made in England.

Dims:-  
 Miniature  
 Overall length.....125mm  
 Overall width .....75mm  
 Standard  
 Overall length.....245mm  
 Overall width .....135mm



CODE	TYPE	PRICE
MTB040	Crown Beechwood Bench Hook 125 x 75mm	£9.99
160-155	Crown Beechwood Bench Hook 245 x 135mm	£14.99

**ALUMINIUM MITRE BOX** a high quality aluminium mitre box used for the accurate cutting of 45° mitre and 90° square ends. The box has one 90° guide slot and two 45° guide slots, the base has grooves to assist with holding the material securely whilst sawing. The box also has a lip on the lower front edge for holding it securely to the work bench. Ideal for use with most razor saws and other manufacturers slitting saws.



CODE	TYPE	PRICE
050-710	Aluminium Mitre Box	£7.99